



### What does LGBTQIA2s+ stand for?

- L: Lesbian
- G: Gay
- B: Bisexual
- T: Transgender
- Q: Queer
- I: Intersex
- A: Asexual
- 2s: Two-Spirit
- +: The countless other identities.

### Isn't QUEER a bad word?

For many people, **queer** is a word of pride and the best way to “umbrella” diverse sexualities and genders. It is also the academic term for LGBTQIA2s+.

It used to be a slur, but the **queer** community reclaimed the word. However, it is important to note that for some it's still a slur, and they wouldn't use it, or want it used to describe them. Context is important when using the word **queer**.



### About Briarpatch:

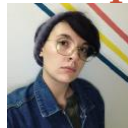
Briarpatch Youth Services, Inc. is a private, non-profit organization serving Dane County.

### Strengthening the Lives of Youth and Families

Phone: 608.245.2550  
Email: [contact@briarpatch.org](mailto:contact@briarpatch.org)  
Web: [www.briarpatch.org](http://www.briarpatch.org)

2720 Rimrock Road  
Madison, WI 53713

### Group Facilitators:



Ollie Schaal (they/them/theirs)



Emily Walden (she/her/hers)



## LGBTQIA2s+ Youth Peer Support Group

email us at  
[tlu@briarpatch.org](mailto:tlu@briarpatch.org)

